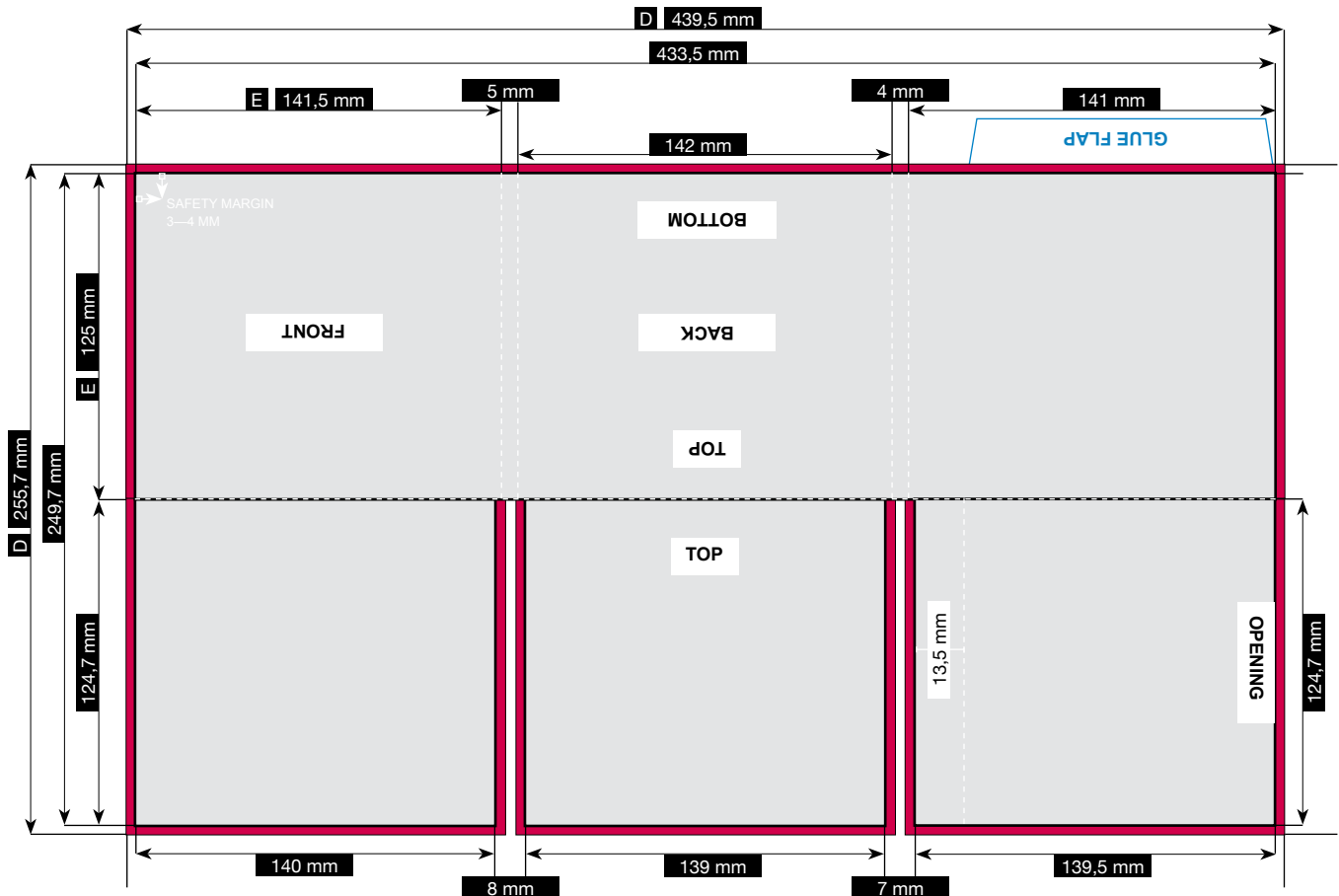


6-sided CD digisleeve

6-sided CD digisleeve with tunnel sleeve on the right.



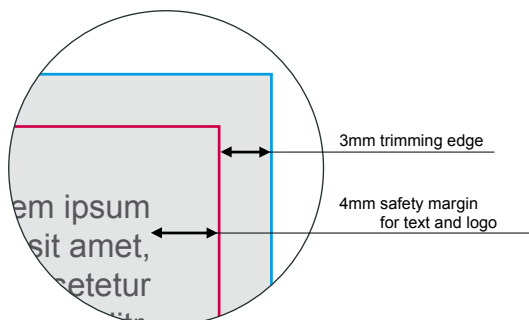
- 3 mm trimming edge
- Trimmed size
- - - Perforation line / grooving

- Data format 439,5 x 255,7 mm
It contains the 3 mm trimming edge. Your data for us must have this size. (see „trimming edge“).

- Trimmed size 433,5 x 249,7 mm
The trimmed size in turn describes the final size if the print data is cut to the correct format.

- Trimming edge 3 mm
Print data always needs to be 3 mm bigger than the actual document. After printing it gets trimmed down to their final size. This prevents trapping – white gaps on the edge of the paper. (see chart – shown as grey area)

- Safety margin of 4 mm
from the edge of the trimmed size (see chart)



Important points for creating print data

Resolution	<p>When producing your printed matter, make sure that a resolution of 300 dpi or ppi is set. This guarantees a detailed and high quality resolution. dpi stands for the abbreviation "dots per inch". It describes point density in image reproduction and is a measure of the level of detail, i.e. the resolution of an image or graphic.</p>
Color application	<ol style="list-style-type: none">1. Color applications of less than 10% are not recommended for print data, as they are barely visible in the print.2. To create a pure deep black, please set black to 100% in the color palette.3. Please create fine lines (e.g. 0.25 pt) in pure deep black (100%)
Line width	<p>For positive lines (dark line on a light background) you should use a thickness of at least 0.25 pt (0.09 mm). For negative lines (light line on a dark background), please use a line width of at least 0.5 pt (0.18 mm).</p>
Create file in CMYK mode (4-colored) or grey scales (2-colored)	<p>CMYK is the abbreviation for the 4 color components cyan, magenta, yellow and key (black). These serve as the basis for all modern printing processes for creating colored images. When creating print files, it is imperative that they are created in CMYK mode. The RGB mode is only suitable for display on the monitor and is not suitable for printing, as the colors are otherwise displayed differently in the print. ISO Coated v2 300% (ECI)</p>
The following color profiles may be used	<p>Free to download from www.eci.org</p>
Save print file either as PDF / X-3: 2002, tif / tiff or jpg / jpeg	<ul style="list-style-type: none">● PDF / X-3: 2002 Requirements:<ul style="list-style-type: none">- PDF version must be 1.3- Transparencies are not allowed- Comments and form fields are not allowed- Encryption (e.g. password protection) is not allowed- OPI comments are not allowed- Transfer curves are not allowed- An output intent must be specified- Layers are not allowed- All fonts must be converted to outlines● tif / tiff requirements:<ul style="list-style-type: none">- Reduce to the background layer- Alpha channels are not allowed- Clipping paths are not allowed- Save without compression, interleaved pixel arrangement● jpg / jpeg requirements:<ul style="list-style-type: none">- Use only standard JPG format (no JPG 2000 or similar)- Save with maximum quality and baseline (default)